

STURDY Midi Store

The New STURDY Midi Store is an ideal storage system that can be used for many different applications within all areas of industry.

The STURDY Midi Store is a secure and lockable unit for both promotional and business use. It is ideal for the storage and display of peat briquettes, coal, peat moss and dog & animal feed. It is ideal for use in garage forecourts and shop fronts as products can be neatly displayed to the public. As an optional extra your company name or logo can be placed on the front of the Storage Unit to help promote your company.

The STURDY Midi Store comes with an aluminium roller shutter as standard which allow it to be opened with ease. The rotationally moulded UV stabilised body guarantees a strong and durable weather resistant product. The unit is long lasting and maintenance free.

The STURDY Midi Store has a capacity of 1.5m³ which is larger than other similar products on the market.

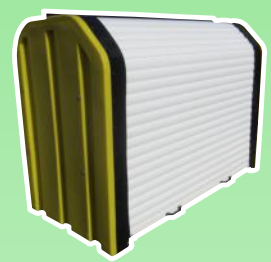
The unit uses a simple padlock and an eye-bolt system to lock the unit keeping the items stored within safe and secure. The plastic handles allow the lightweight shutter to be opened with ease.

Length: 1,650mm	Width: 810mm
Height: 1,200mm	Capacity: 1.5m ³



The STURDY Midi Store comes in a variety of colours. Just ask our sales team for the options available.

As an optional extras, the STURDY Midi Store can be fitted with shelving to allow for multi-layered storage. An advertising panel can also be fitted to help promote your business or advertise the products your are selling. The advertising panel is mounted on top of the unit and is fixed in position.



Point of Sale Strips



Optional Extra Shelving



Optional Extra Powder Coated Signage Panel



Lift-Up Flap on Front of Panel



Place Your Logo Or Branding Here

STURDY PRODUCTS LIMITED

Blessington Industrial Estate, Blessington, Co Wicklow

Tel: +353 (0)45 865044 Fax: +353 (0)45 865721

E-mail: sales@sturdyproducts.com Website: www.sturdyproducts.com